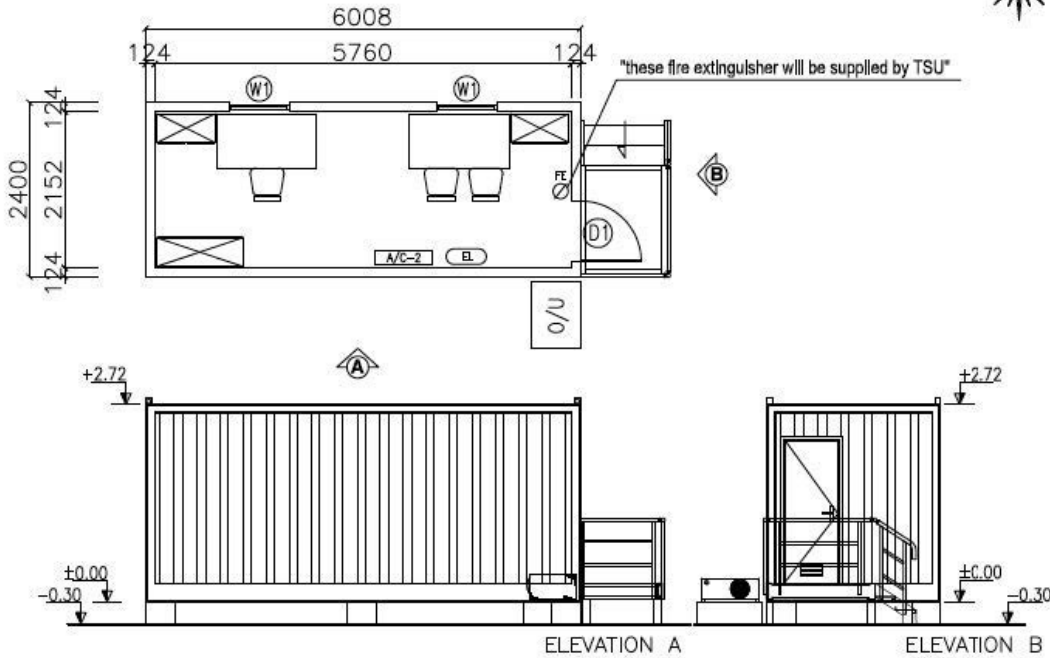


# DEMONTABLE CONTAINERS - OFFICES & TOILETS



VENDOR DOCUMENT REVIEW  
 1. REVIEW AND REVISIT  
 2. TO BE ISSUED AS FINAL, PROVIDES COMMENTS AND INCORPORATED  
 3. NO COMMENT - FINAL ISSUE  
 2014.04.11  
 15:34:33  
 +02'00'

NOTE		
CODE	DIMENSIONS (mm)	NAME
D1	840200	EXTERNAL DOOR W/ HANDLE
D2	140190	INTERNAL DOOR
D3	840190	WC DOOR WOODEN
D3A	840190	WC DOOR (COMBIB BOARD)
D4	1700200	DOUBLE EXTERNAL DOOR
D5	1480190	DOUBLE INTERNAL DOOR
W1	840120	VERTICAL SLIDING WINDOW
W2	800430	SLIDING WINDOW

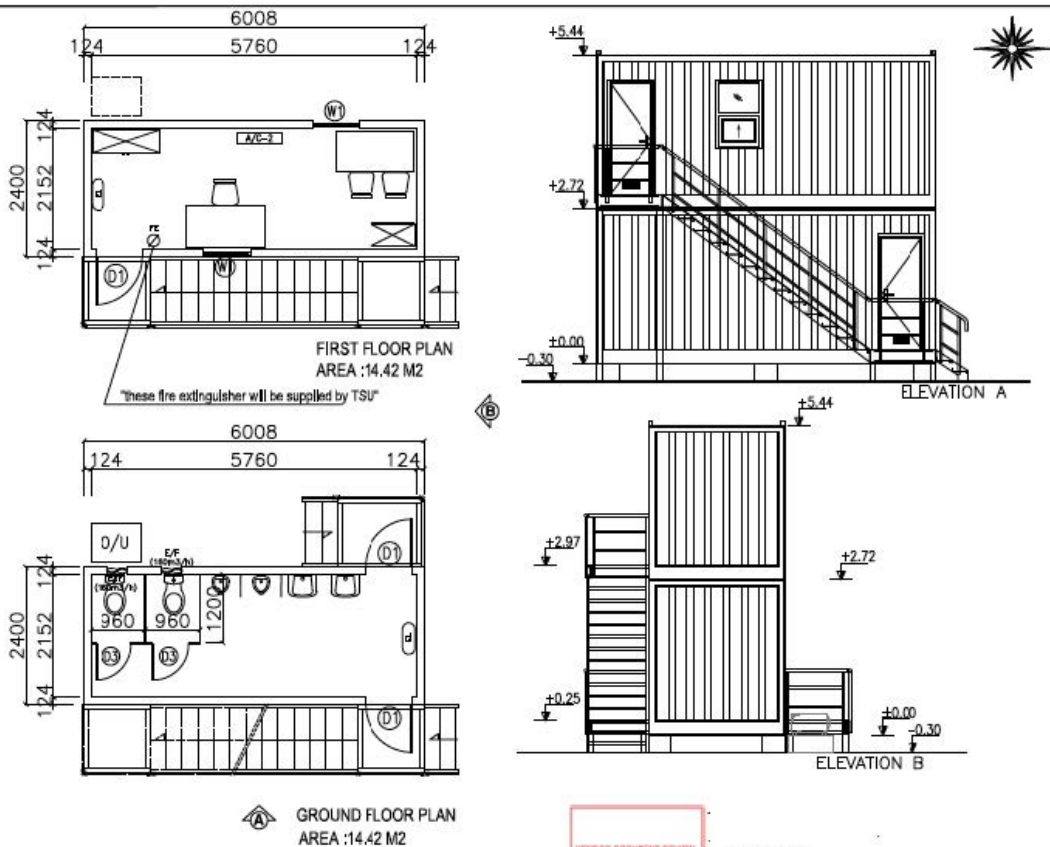
AC	16,000 BTU SPLIT AC (3.23 kw)	1 UNIT
AD	OUT DOOR UNIT (16000 BTU)	1 UNIT
CE	EMERGENCY LIGHT	1 UNIT

Rev. No.	Date	Rev. No.	Date
1 Rev.1	09.11.2012	8	
2 Rev.2	20.12.2012	9	
3 Rev.3	28.04.2013	10	
4 Rev.4	06.05.2013	11	
5 Rev.5	04.07.2013	12	
6 Rev.6	23.10.2013	13	
7 Rev.7	28.01.2014	14	

Drawn by:	SENZ BICER
Reviewed by:	BUSRA BALTASI
Dwg Number:	T1589-BA01
Sheet Size:	A4
Plot Scale:	-
Dimension Type:	Millimeter
Proposal Number:	T1589
Proposal Date:	16.08.2012
Approval Date:	
Status:	<input type="checkbox"/> Pending <input checked="" type="checkbox"/> Ready for Construction <input type="checkbox"/> In Progress

PROJECT  
 Building Name / Drawing Name  
 General Arrangement Drawings  
 OFFICES (B143-15)

Quantity:	1
Product Type:	DEMONTABLE CONTAINER
Area:	14,42 M2



VENDOR DOCUMENT REVIEW  
 1. REVIEW AND REVISIT  
 2. TO BE ISSUED AS FINAL, PROVIDES COMMENTS AND INCORPORATED  
 3. NO COMMENT - FINAL ISSUE  
 2014.04.11  
 15:33:31  
 +02'00'

NOTE		
CODE	DIMENSIONS (mm)	NAME
D1	840200	EXTERNAL DOOR W/ HANDLE
D2	140190	INTERNAL DOOR
D3	840190	WC DOOR WOODEN
D3A	840190	WC DOOR (COMBIB BOARD)
D4	1700200	DOUBLE EXTERNAL DOOR
D5	1480190	DOUBLE INTERNAL DOOR
W1	840120	VERTICAL SLIDING WINDOW
W2	800430	SLIDING WINDOW

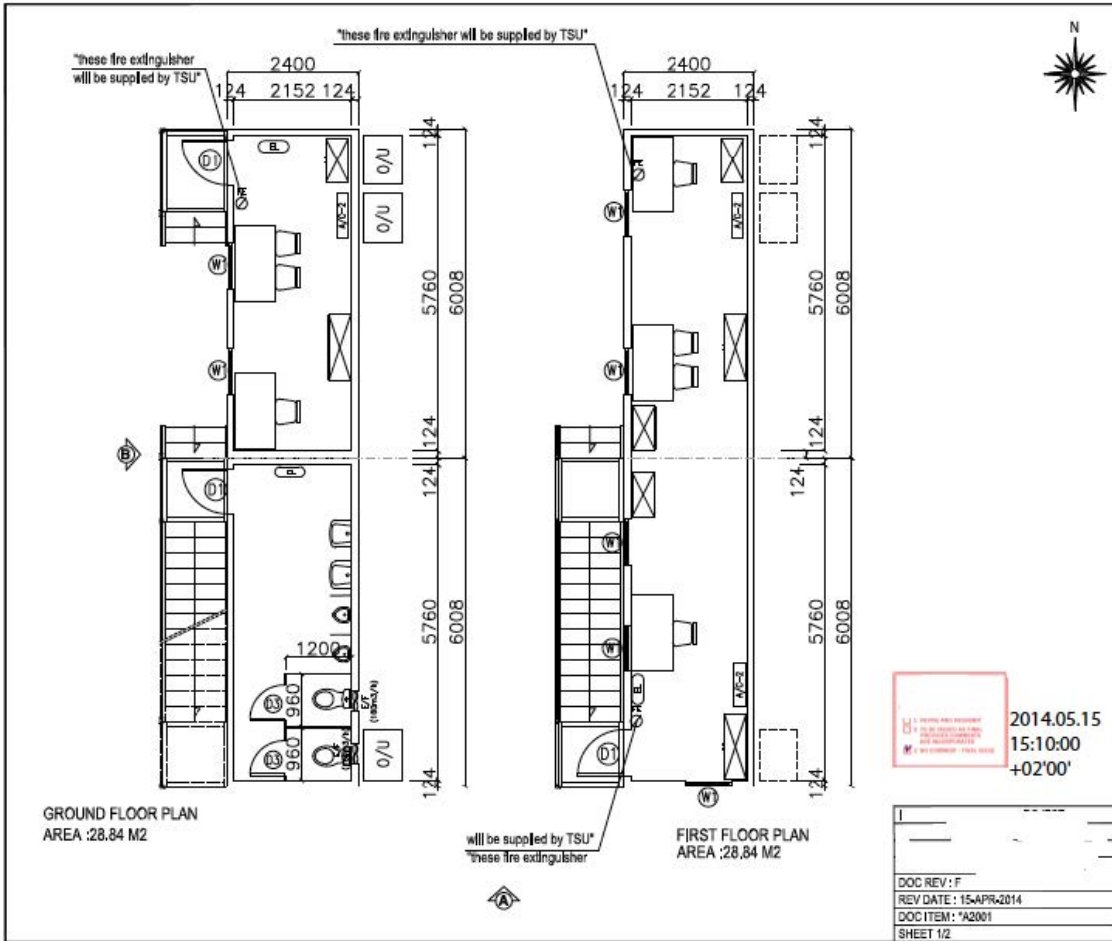
AC	16,000 BTU SPLIT AC (3.23 kw)	1 UNIT
AD	OUT DOOR UNIT (16000 BTU)	1 UNIT
CE	EMERGENCY LIGHT	2 UNIT
ES	EXHAUST FAN (16000)	2 UNIT

Rev. No.	Date	Rev. No.	Date
1 Rev.1	09.11.2012	8 Rev.8	28.01.2014
2 Rev.2	20.12.2012	9	
3 Rev.3	28.04.2013	10	
4 Rev.4	06.05.2013	11	
5 Rev.5	04.07.2013	12	
6 Rev.6	23.10.2013	13	
7 Rev.7	23.12.2013	14	

Drawn by:	SENZ BICER
Reviewed by:	BUSRA BALTASI
Dwg Number:	T1589-BA01
Sheet Size:	A4
Plot Scale:	-
Dimension Type:	Millimeter
Proposal Number:	T1589
Proposal Date:	16.08.2012
Approval Date:	
Status:	<input type="checkbox"/> Pending <input checked="" type="checkbox"/> Ready for Construction <input type="checkbox"/> In Progress

PROJECT  
 Building Name / Drawing Name

Quantity:	1
Product Type:	DEMONTABLE CONTAINER
Area:	28,84 M2



NOTE			
CODE	DIMENSIONS (mm)	NAME	
D1	840200	EXTERNAL DOOR W/SHIELD	
D2	140180	INTERNAL DOOR	
D3	840180	WC DOOR (WOODEN)	
D3A	840180	WC DOOR (CEMENT BOARD)	
D4	170200	DOUBLE EXTERNAL DOOR	
D5	140180	DOUBLE INTERNAL DOOR	
W1	840120	VERTICAL SLEEPS WINDOW	
W2	80240	BASE WINDOW	

U1	10,000 BTU SPLIT AC (3.23 kw)	3 UNITS
U2	OUT DOOR UNIT (10160000) (sq)	3 UNITS
U3	EMERGENCY LIGHT	3 UNITS
U4	EXHAUST FAN (10000)	2 UNITS

Rev. No.	Date	Rev. No.	Date
1 Rev.1	28.11.2012	8 Rev.8	28.01.2014
2 Rev.2	20.12.2012	9 Rev.9	15.04.2014
3 Rev.3	28.04.2013	10	
4 Rev.4	06.05.2013	11	
5 Rev.5	04.07.2013	12	
6 Rev.6	23.10.2013	13	
7 Rev.7	23.12.2013	14	

Drawn by:	SENIZ SICER
Reviewed by:	BUSRA BALTASI
Dwg Number:	T1589-EIAD1
Sheet Size:	A4
Plot Scale:	-
Dimension Type:	Millimeter
Proposal Number:	T1589
Proposal Date:	16.08.2012
Approval Date:	
Status:	<input type="checkbox"/> Proposed <input checked="" type="checkbox"/> Ready For Construction <input type="checkbox"/> Project Open

Quantity: 1

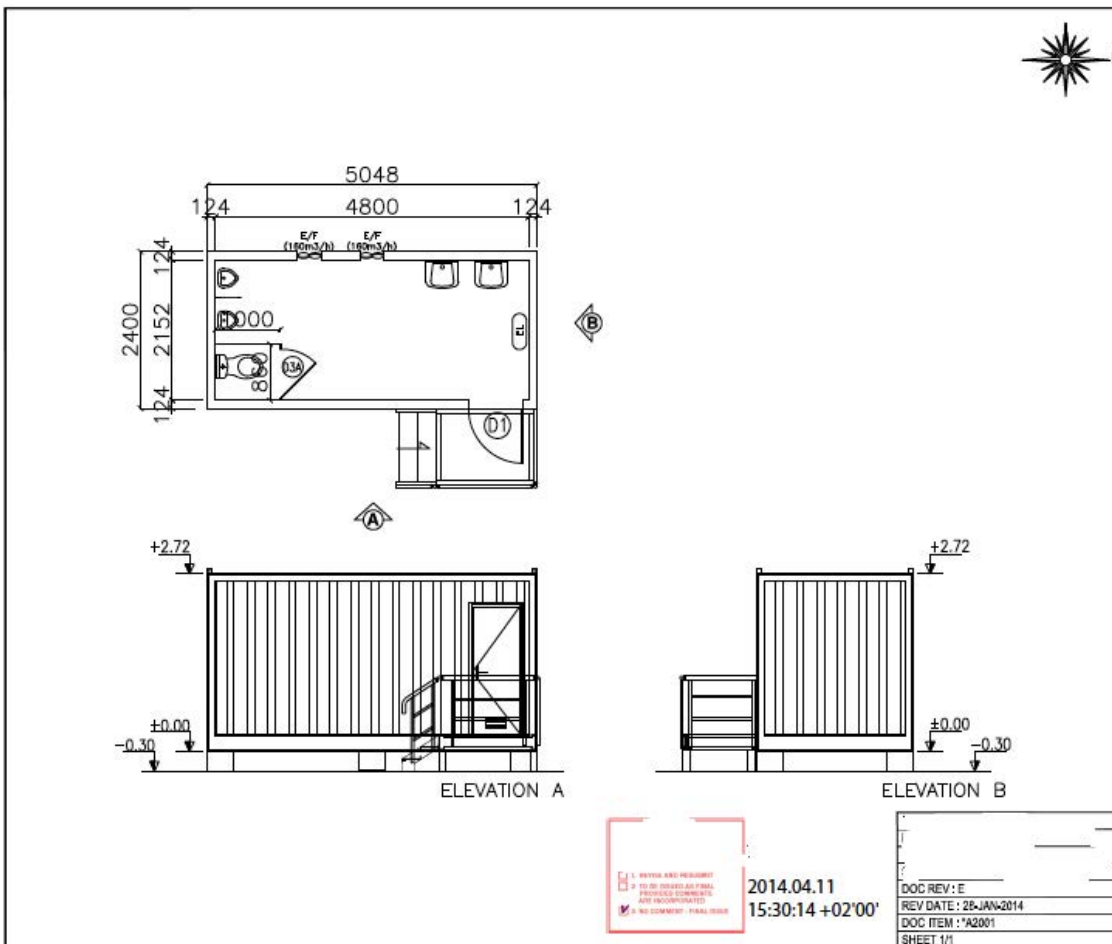
Product Type: DEMOUNTABLE CONTAINER

Area: 57.88 M2

Capacity: 10

2014.05.15  
15:10:00  
+02'00'

DOC REV: F  
REV DATE: 15-APR-2014  
DOC ITEM: \*A2001  
SHEET 1/2



NOTE			
CODE	DIMENSIONS (mm)	NAME	
D1	840200	EXTERNAL DOOR W/SHIELD	
D2	140180	INTERNAL DOOR	
D3	840180	WC DOOR (WOODEN)	
D3A	840180	WC DOOR (CEMENT BOARD)	
D4	170200	DOUBLE EXTERNAL DOOR	
D5	140180	DOUBLE INTERNAL DOOR	
W1	840120	VERTICAL SLEEPS WINDOW	
W2	80240	BASE WINDOW	

U1	EMERGENCY LIGHT	1 UNIT
U2	EXHAUST FAN (10000)	2 UNITS

Rev. No.	Date	Rev. No.	Date
1 Rev.1	09.11.2012	8	
2 Rev.2	20.12.2012	9	
3 Rev.3	26.04.2013	10	
4 Rev.4	06.05.2013	11	
5 Rev.5	04.07.2013	12	
6 Rev.6	23.12.2013	13	
7 Rev.7	28.01.2014	14	

Drawn by:	SENIZ SICER
Reviewed by:	BUSRA BALTASI
Dwg Number:	T1589-EIAD1
Sheet Size:	A4
Plot Scale:	-
Dimension Type:	Millimeter
Proposal Number:	T1589
Proposal Date:	16.08.2012
Approval Date:	
Status:	<input type="checkbox"/> Proposed <input checked="" type="checkbox"/> Ready For Construction <input type="checkbox"/> Project Open

Quantity: 1

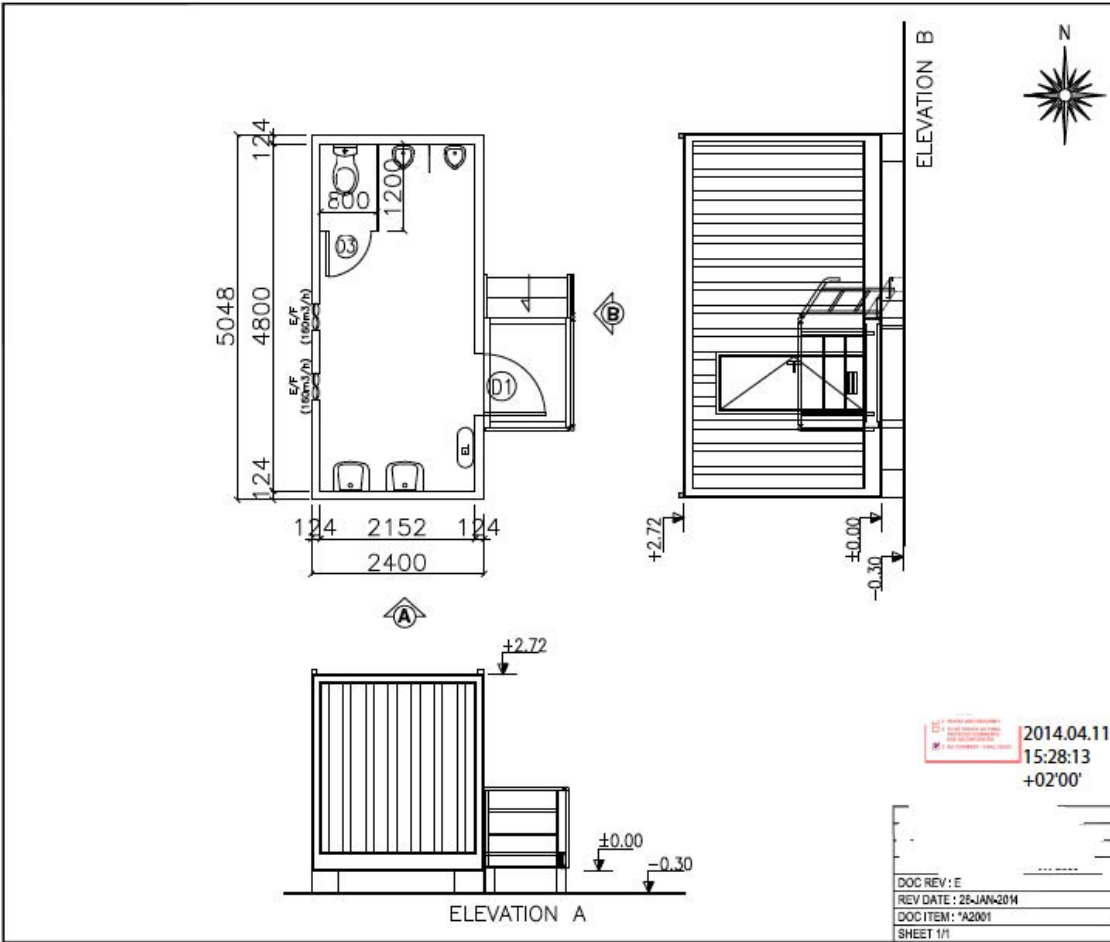
Product Type: DEMOUNTABLE CONTAINER

Area: 12,12 M2

Capacity: 10

2014.04.11  
15:30:14 +02'00'

DOC REV: E  
REV DATE: 28-JAN-2014  
DOC ITEM: \*A2001  
SHEET 1/1



NOTE			
CODE	DIMENSIONS (mm)	NAME	
D1	840200	EXTERNAL DOOR W/WHILE	
D2	140180	INTERNAL DOOR	
D3	840180	WC DOOR WOODEN	
D3A	840180	WC DOOR CEMENT BOARD	
D4	170200	DOUBLE EXTERNAL DOOR	
D5	140180	DOUBLE INTERNAL DOOR	
W1	840120	VERTICAL SLIDING WINDOW	
W2	80040	SLANT WINDOW	
CB		EMERGENCY LIGHT	1 UNIT
EX		EXHAUST FAN (100m2/h)	2 UNITS

Rev. No.	Date	Rev. No.	Date
1	09.11.2012	8	
2	20.12.2012	9	
3	26.04.2013	10	
4	06.05.2013	11	
5	04.07.2013	12	
6	23.12.2013	13	
7	28.01.2014	14	

Drawn by:	SENIZ BICER
Reviewed by:	BUSRA BALTASI
Dwg Number:	T1589-GA01
Sheet Size:	A4
Plot Scale:	-
Dimension Type:	Millimeter
Proposal Number:	T1589
Proposal Date:	16.08.2012
Approval Date:	

Status	Prepared	Ready For Construction
	X	

PROJECT

Building Name / Drawing Name  
General Arrangement Drawings  
TOILETS (B143-115)

Quantity: 1

Product Type: DEMOUNTABLE CONTAINER

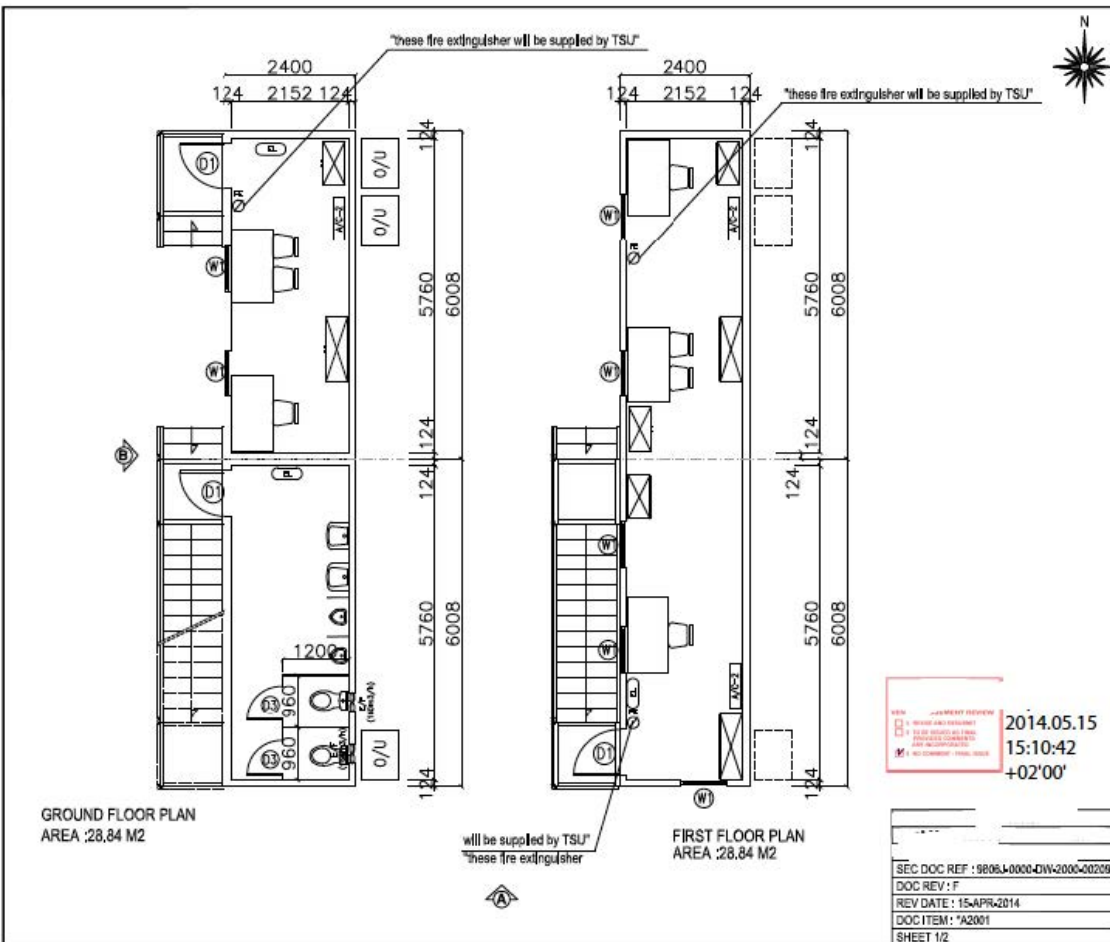
Area: 12,12 M2

Capacity Log

2014.04.11  
15:28:13  
+02'00'

DOC REV: E  
REV DATE: 25-JAN-2014  
DOC ITEM: 'A2001'  
SHEET 1/1



NOTE			
CODE	DIMENSIONS (mm)	NAME	
D1	840200	EXTERNAL DOOR W/WHILE	
D2	140180	INTERNAL DOOR	
D3	840180	WC DOOR WOODEN	
D3A	840180	WC DOOR CEMENT BOARD	
D4	170200	DOUBLE EXTERNAL DOOR	
D5	140180	DOUBLE INTERNAL DOOR	
W1	840120	VERTICAL SLIDING WINDOW	
W2	80040	SLANT WINDOW	
CB		EMERGENCY LIGHT	1 UNIT
EX		EXHAUST FAN (100m2/h)	2 UNITS

Rev. No.	Date	Rev. No.	Date
1	09.11.2012	8	28.01.2014
2	20.12.2012	9	15.04.2014
3	26.04.2013	10	
4	06.05.2013	11	
5	04.07.2013	12	
6	23.10.2013	13	
7	23.12.2013	14	

Drawn by:	SENIZ BICER
Reviewed by:	BUSRA BALTASI
Dwg Number:	T1589-GA01
Sheet Size:	A4
Plot Scale:	-
Dimension Type:	Millimeter
Proposal Number:	T1589
Proposal Date:	16.08.2012
Approval Date:	

Status	Prepared	Ready For Construction
	X	

PROJECT

Building Name / Drawing Name  
General Arrangement Drawings  
TOILETS/OFFICES (B143-111)/B143-112(B143-211)

Quantity: 1

Product Type: DEMOUNTABLE CONTAINER

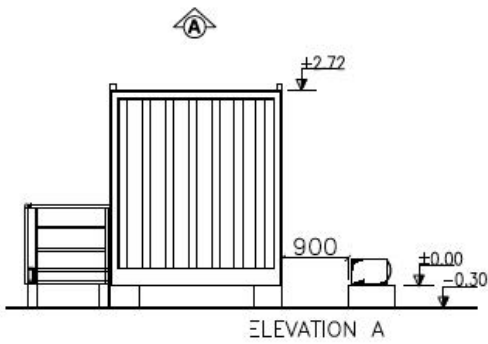
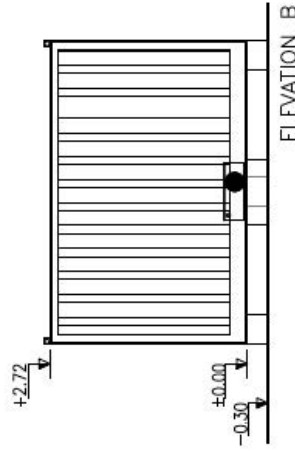
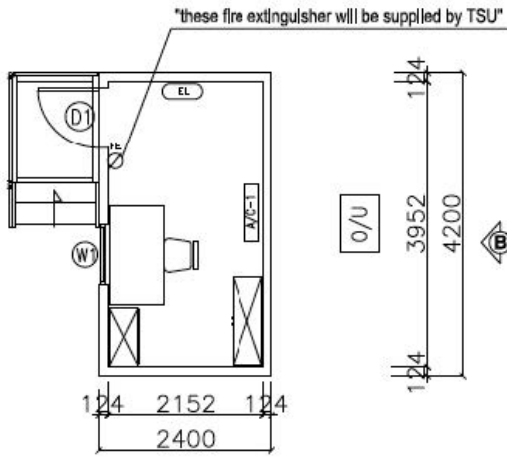
Area: 57,88 M2

Capacity Log

2014.05.15  
15:10:42  
+02'00'

SEC DOC REF : 98064-0000-DW-2000-00209  
DOC REV: F  
REV DATE: 15-APR-2014  
DOC ITEM: 'A2001'  
SHEET 1/2



VENDOR DOCUMENT REVIEW  
 NO REVIEW AND PROCEED  
 REVIEW AND APPROVE  
 REVIEW AND APPROVE WITH COMMENTS AND REVISIONS REQUIRED  
 REVIEW AND APPROVE WITH COMMENTS AND REVISIONS REQUIRED - FINAL REVIEW

2014.04.11  
 15:35:29  
 1 02'00"

DOC REV: D  
 REV DATE: 25-JAN-2014  
 DOC ITEM: 'A2001'  
 SHEET 1/1

NOTE		
CODE	DIMENSIONS (mm)	NAME
D1	840/2000	EXTERNAL DOOR (W/ HANDLE)
D2	124/1900	INTERNAL DOOR
D3	840/1900	1/2 DOOR (PROCESSED)
D4	840/1900	1/2 DOOR (COMBINATION LOCK)
D5	1700/2000	DOUBLE EXTERNAL DOOR
D6	1450/1900	DOUBLE INTERNAL DOOR
W1	840/1200	VERTICAL SLIDING WINDOW
W2	800/400	RAM WINDOW

<input checked="" type="checkbox"/>	12000 BTU SPLIT A/C (148 watt)	1 UNIT
<input checked="" type="checkbox"/>	OUT DOOR LIGHT (7000404000 opt)	1 UNIT
<input checked="" type="checkbox"/>	EMERGENCY LIGHT	1 UNIT

Rev. No.	Date	Rev. No.	Date
1	06.11.2012	8	
2	20.12.2012	9	
3	25.04.2013	10	
4	06.06.2013	11	
5	24.07.2013	12	
6	23.10.2013	13	
7	28.01.2014	14	

Drawn by:	SENZ BICER
Reviewed by:	SUSRA BALTASI
Dwg. Number:	T1589-JA01
Sheet Size:	A4
Pkt Scale:	-
Dimension Type:	Millimeter
Proposal Number:	T1589
Proposal Date:	16.08.2012
Approval Date:	
Status:	Approved <input checked="" type="checkbox"/> Ready for Construction <input type="checkbox"/>
Project Name:	PROJECT
Subsystem / Drawing Name:	General Arrangement Drawings OFFICES (B000-04)
Quantity:	1
Product Type:	DEMOUNTABLE CONTAINER
Area:	10.08 M2
Inventory Log:	